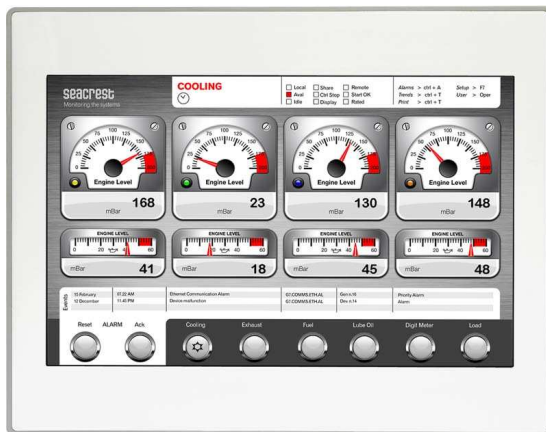


# UniOP eTOP313

The UniOP eTOP Series 300 combines state-of-the-art features and performance with an outstanding design. They are the ideal choice for HMI applications including factory and building automation. The eTOP313 features widescreen 13.3" TFT display with state-of-the-art resolution and full vector graphic capabilities. This is the ideal product for high-end HMI applications. Connections include Ethernet and USB.



- 13.3" TFT color display, LED backlight
- 1280x800 pixel (WXGA) resolution, 64K colors
- Advanced vector graphics
- Resistive touchscreen
- 64 MB user memory
- 10/100 Ethernet interface
- USB interface
- Connection to bus systems using optional plug-in modules
- Slim design. Mounting depth less than 50mm

## Highlights

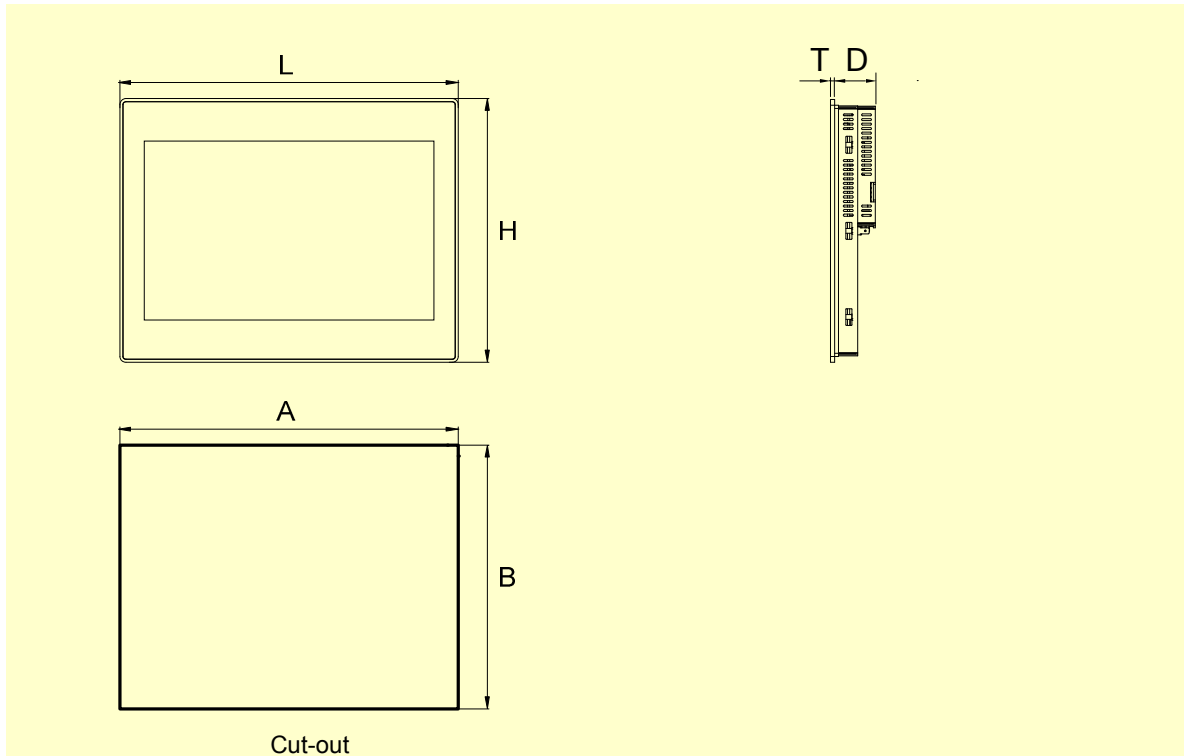
The eTOP Series 300 HMI panels are fully compatible with UniOP Designer 6 software.

- Powerful and intuitive programming with the UniOP Designer 6 software.
- Supports more than 150 communication drivers.
- Built-in Ethernet port for communication with devices, programming the HMI from Designer and retrieving data from computers.
- USB host port for the connection of flash drives. Flash drives can be used for upgrading applications and firmware.
- Optional plug-in modules for fieldbus systems and networks. Compatible with TCM and SCM modules.
- Dual-driver communication capability.
- Vector graphic capabilities including the support of multiple layers and object transparency.
- Data display in numerical, text, bargraph, analog gauges and graphic image formats. Dynamic object properties supported.
- Data acquisition and trend presentation. Trend data can be transferred to a host computer using the Ethernet connection.
- Recipe data storage. Recipe data can be transferred to a host computer using the Ethernet connection or copied to flash drives via USB connection.
- Multilanguage applications. Far East languages are supported. The number of runtime languages is limited only by the available memory. All text information in the application can be exported to files in Unicode format for easier translation.
- Powerful macro editor to configure touchscreen operation
- Alarms and historical alarm list. Alarm and event information can be printed or transferred to a host computer.
- Eight level password protection.
- Report printing to serial printer. Reports are freely configurable using Designer.
- Ethernet-based UniNet network to share data between UniOP HMIs and to serve data using UniNet OPC Server.

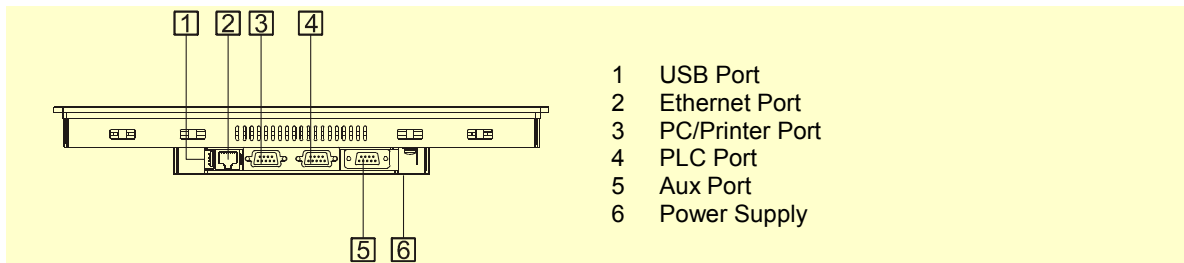
## Technical Data

|                             |  |                                 |   |
|-----------------------------|--|---------------------------------|---|
| <b>Display</b>              |  | <b>Password</b>                 |   |
| Type                        | TFT  | Hardware Real Time              | Yes   |
| Resolution                  | 1280x800, WXGA   | Clock                           | Yes, with battery back-up   |
| Active display area         | 13.3" diagonal   | Screen saver                    | Yes   |
| Colors                      | 64K  | Buzzer                          | Yes, audible feedback for touchscreen                                   |
| Backlight                   | LED  | <b>Ratings</b>                  |   |
| Brightness                  | 250 Cd/m <sup>2</sup> typ.   | Power supply voltage            | 24 Vdc (18 to 30 Vdc)   |
| Dimming                     | Yes  | Current consumption             | 0.6 A at 24 Vdc(max.)   |
| <b>Memory</b>               |  | Fuse                            | Automatic   |
| User memory                 | 64 MB internal Flash   | Weight                          | Approx 2.5 Kg   |
| <b>Front panel</b>          |  | Battery                         | Rechargeable Lithium battery, not user-replaceable                      |
| Touchscreen                 | Analog resistive   | <b>Environmental Conditions</b> |   |
| User LED indicators         | 1  | Operating temperature           | 0 to 50 °C  |
| System LED indicators       | 4  | Storage temperature             | -20 to +70 °C   |
| <b>Interfaces</b>           |  | Operating and storage humidity  | 5 – 85 % relative humidity, non-condensing                              |
| Ethernet port               | 10/100 Mbit  | Protection class                | IP65 (front panel)<br>IP20 (rear)                                       |
| USB port                    | Host interface, version 1.1  | <b>Dimensions</b>               |   |
| PC/Printer port             | RS-232, RS-485, RS-422, software configurable                      | Faceplate LxH                   | 337x267 mm  |
| PLC port                    | RS-232, RS-485, RS-422, software configurable                      | Cutout AxB                      | 326x256 mm  |
| Aux port                    | Yes, fieldbus and controller modules                               | Depth D+T                       | 42mm+4mm  |
| <b>Functionality</b>        |  | <b>Approvals</b>                |   |
| Vector graphics             | Yes  | CE                              | Emission<br>EN 61000-6-4  |
| Object dynamics (hide/show) | Yes  |                                 | Immunity<br>EN 61000-6-2<br>for installation in industrial environments |
| TrueType fonts              | Yes  | UL                              | UL508 Listed  |
| Dual driver capability      | Yes  |                                 |   |
| Video input                 | No   |                                 |   |
| Data acquisition and trends | Yes  |                                 |   |
| Multilanguage               | Yes, number of run-time languages limited only by available memory |                                 |   |
| Recipe memory               | Yes. Flash memory storage limited only by available memory         |                                 |   |
| UniNet network              | Client/Server  |                                 |   |
| Alarms                      | 1024   |                                 |   |
| Event list                  | 1024   |                                 |   |

**Dimensions**



**Connections**



**Ordering Information**

| <b>Model</b> | <b>Part Number</b> | <b>Description</b>  |
|--------------|--------------------|---|
| eTOP313      | ETOP313U101        | 13.3" TFT color touchscreen with Ethernet and USB interfaces. White front panel.            |
|              | ETOP313U201        | 13.3" TFT color touchscreen with Ethernet and USB interfaces. Silver front panel.           |
|              | ETOP313U301        | 13.3" TFT color touchscreen with Ethernet and USB interfaces. Black front panel.            |
| PROT-15      |                    | Disposable protection foil for 12.1" and 13.3" eTOP touch panels (10 pieces).               |
| PROT-21      |                    | Disposable protection foil for 12.1" and 13.3" eTOP touch panels (10 pieces). UV resistant. |

---

**ptn0321****Ver. 1.6****Copyright © 2010-2014 Exor International S.p.A. – Verona, Italy**

Subject to change without notice.

The information contained in this document is provided for informational purposes only. While efforts were made to verify the accuracy of the information contained in this documentation, it is provided "as is" without warranty of any kind.

www.uniop.com

ptn0321-6.doc - 17.02.2014

UniOP eTOP313